



Ministry of Education
SINGAPORE

PRESS RELEASE

20 December 2010

FOR IMMEDIATE REPORTING

PRESS RELEASE ON PERFORMANCE BY ETHNIC GROUP 2000 – 2009

1. The Ministry of Education releases data on the performance of the major ethnic groups annually. The objective is to provide feedback to the communities on how their children fared in the national examinations.
2. The following performance charts for the past ten years (2000 – 2009) are attached:
 - a. Three sets of charts showing the performance of the various ethnic groups in the Primary School Leaving Examination (PSLE), Singapore-Cambridge General Certificate of Education Ordinary Level (GCE O-Level) and GCE Advanced Level (GCE A-Level) Examinations¹.
 - b. One chart on the percentage of a primary one (P1) cohort admitted to post-secondary institutions².

SUMMARY: OVERALL 10-YEAR TREND OF PERFORMANCE (2000 – 2009)

Performance in PSLE

3. The PSLE results have remained stable over the last 10 years, both in terms of overall percentage of passes and the proportion of PSLE students who scored A* to C in each subject.

Performance in GCE O-Level Examinations

4. Significant progress has been made in the overall percentage of students with at least three O-Level passes and at least five O-Level passes over the last 10 years, with Malay and Indian students showing marked improvements. The percentage of GCE O-Level students who passed English Language has also increased.

¹The percentages in these charts are based on school candidates who sat for the respective examinations.

²The percentages are based on students who were enrolled in P1 ten years ago.

Performance in GCE A-Level Examinations

5. At the GCE A-Level Examinations, the overall percentage of students with at least 3 'A'/H2' Passes and pass in General Paper or Knowledge and Inquiry has improved over the last 10 years (from 82% in 2000 to 88% in 2009), with Malay students displaying the greatest improvement.

Percentage of P1 Cohort Admitted to Post-Secondary Institutions

6. The percentage of P1 Cohort admitted to post-secondary institutions has improved steadily over the last 10 years (from 84% in 2000 to 93% in 2009), with Malay and Indian students showing marked improvements.

DETAILED DESCRIPTION OF CHARTS

(I) Performance in PSLE (Charts A1 – A5)

Performance by Overall Measure

7. PSLE candidates continued to perform well, with an overall percentage pass rate of above 95%. Please refer to Chart A1.

Performance by Subject

8. The overall proportion of PSLE students who scored A* to C in English Language and Mother Tongue Language continued to be high at above 95%, while the proportion who scored A* to C in Mathematics and Science remained above 80% and 90% respectively. Please refer to Charts A2 – A5.

(II) Performance in GCE O-Level (Charts B1 – B5)

Performance by Overall Measure

9. The proportion of GCE O-Level students with at least 3 O-Level passes remained high at about 95%, while the proportion with at least 5 O-Level passes remained above 80%. Please refer to Charts B1 and B2.

Performance by Subject

10. The overall pass rates for English Language have remained high at above 85%, while pass rates for Mother Tongue Language and Mathematics have remained comparable with the previous years (above 95% and 85% respectively). Please refer to Charts B3 – B5.

(III) Performance in GCE A-Level (Charts C1 – C3)

Performance by Overall Measure

11. The proportion of GCE A-Level students who obtained at least 3 'H2' passes and passed General Paper or Knowledge and Inquiry continued to be above 85%. Please refer to Chart C1.

Performance by Subject

12. The overall pass rates in General Paper (GP) or Knowledge and Inquiry and Mother Tongue Language continued to be high at above 90%. Please refer to Charts C2 and C3.

**(IV) Percentage of P1 Cohort Admitted to Post-Secondary Institutions
(Chart D)**

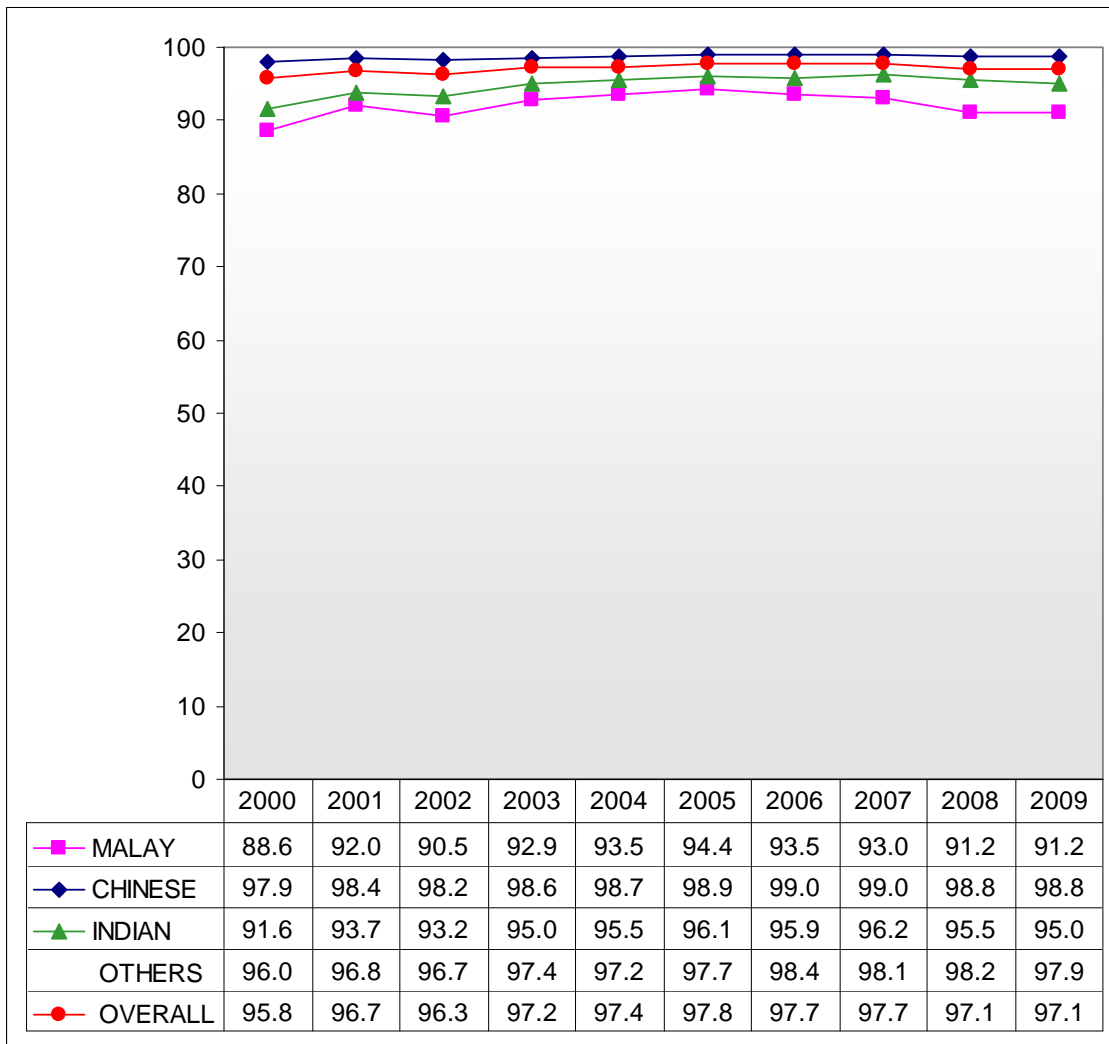
13. The percentage of a P1 cohort admitted to post-secondary institutions³, including private educational institutions, has remained high at above 90%. Please refer to Chart D.

MINISTRY OF EDUCATION

National Archives of Singapore

³Junior colleges, Centralised Institute, Polytechnics, ITE, LASALLE College of the Arts, Nanyang Academy of Fine Arts (NAFA) and other private educational institutions.

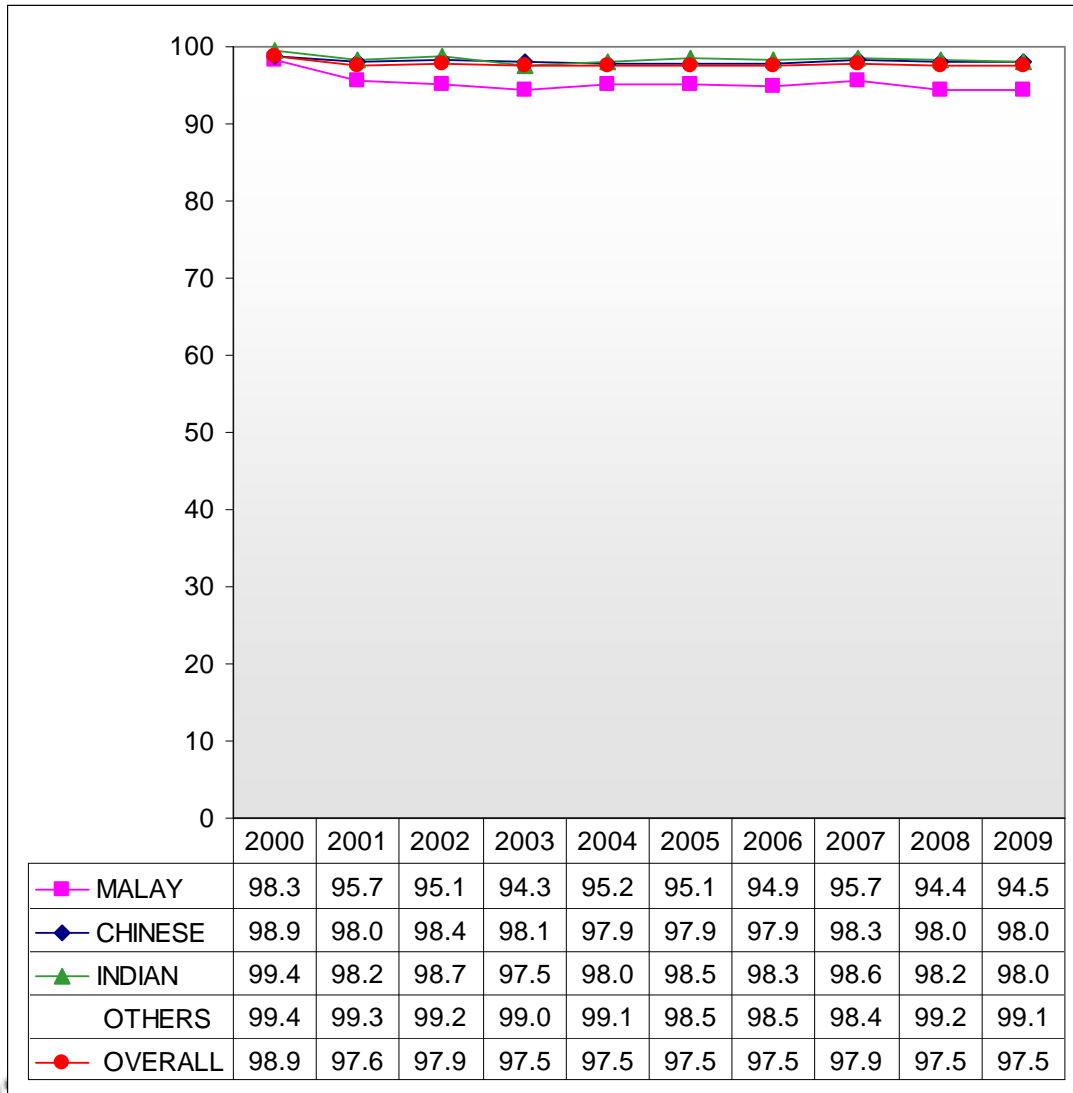
Chart A1: Percentage of Students who Passed PSLE



1. Percentages are based on all students.

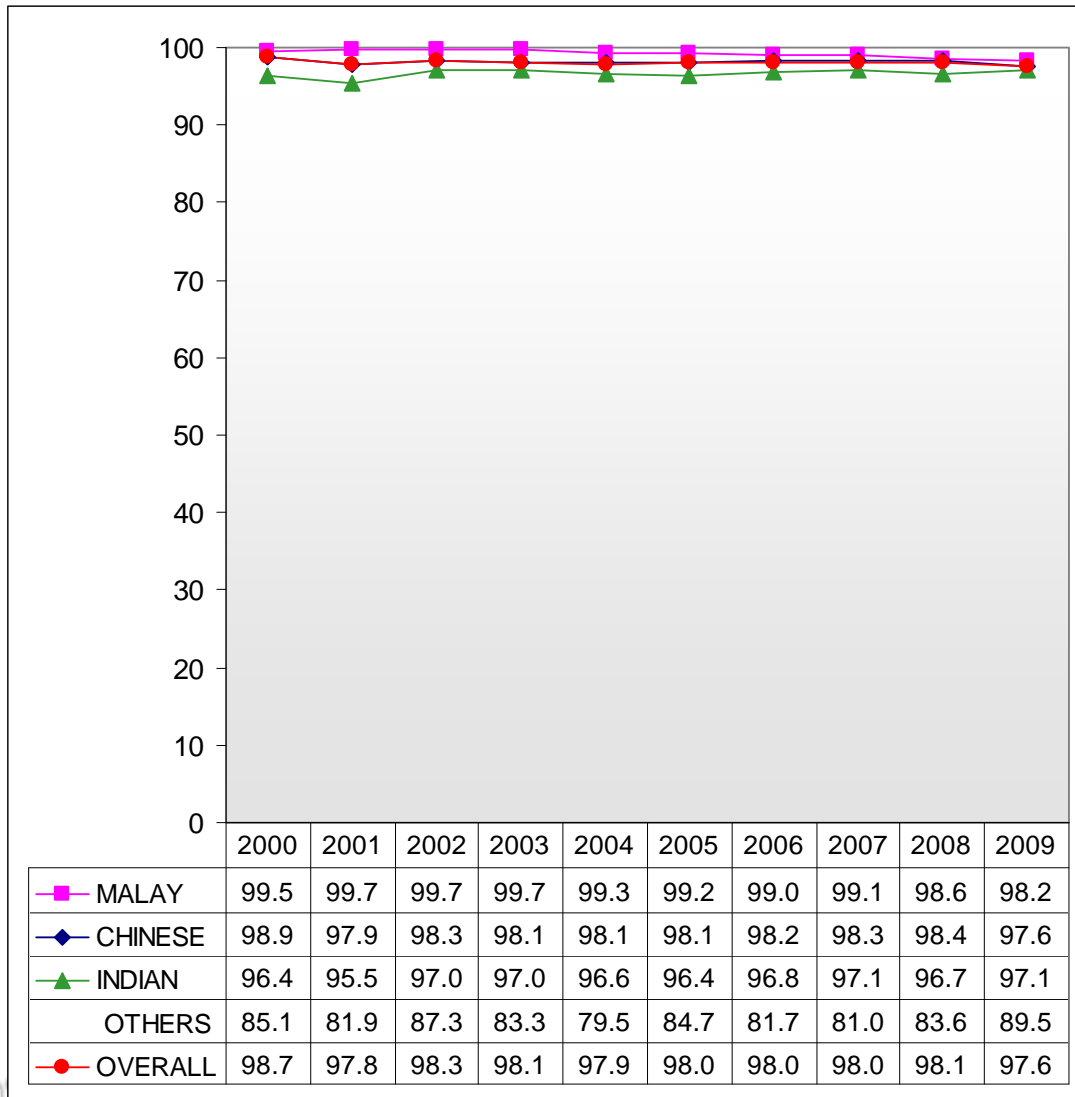
2. The first batch of students under the adjustment of the promotion criteria from P5 to P6 sat for PSLE in 2001.

Chart A2: Percentage of PSLE Students who Scored A*-C in Standard English Language



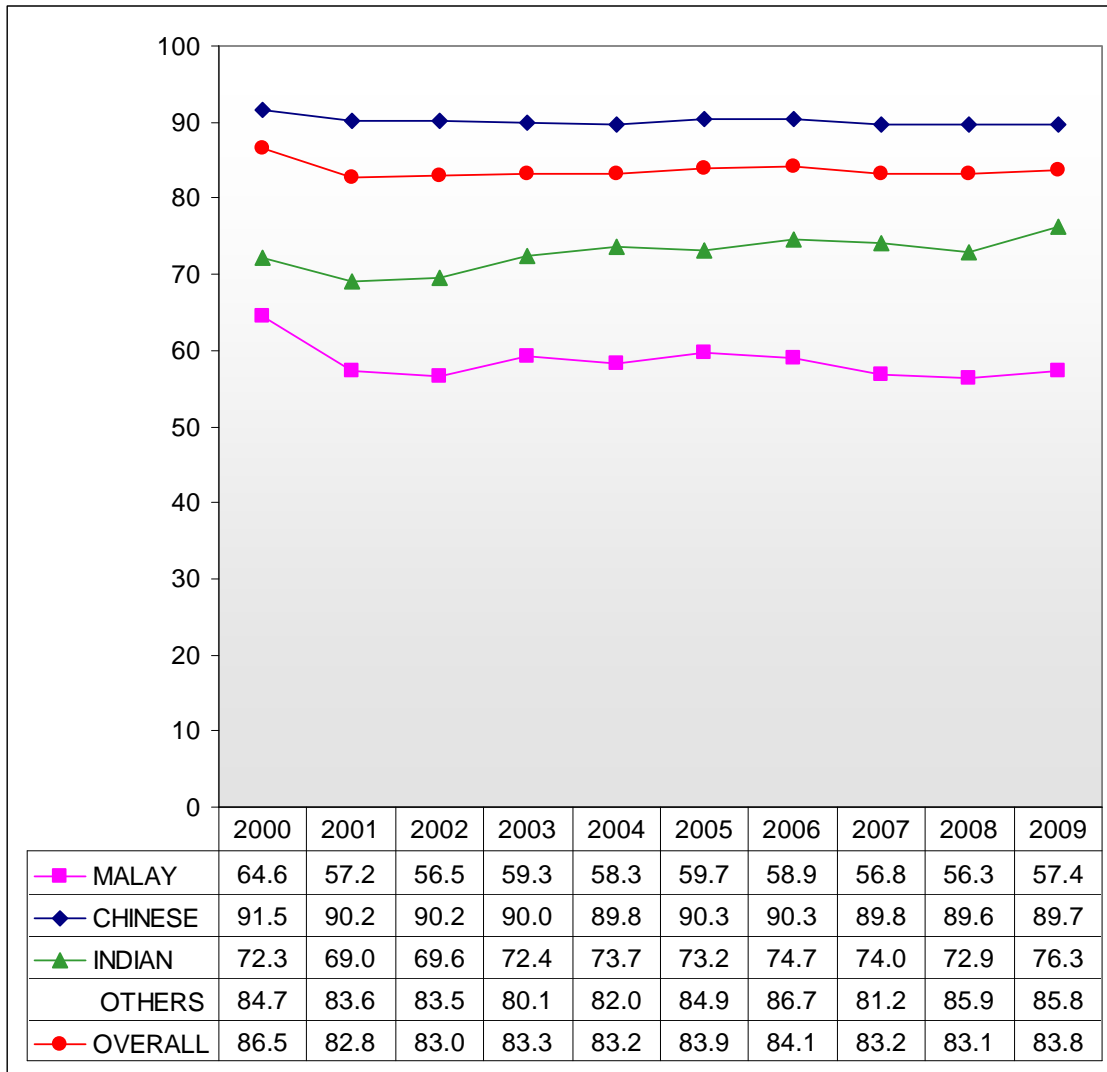
1 The first batch of students under the adjustment of the promotion criteria from P5 to P6 sat for PSLE in 2001.

Chart A3: Percentage of PSLE Students who Scored A* - C in Standard Mother Tongue Language



1 The first batch of students under the adjustment of the promotion criteria from P5 to P6 sat for PSLE in 2001.

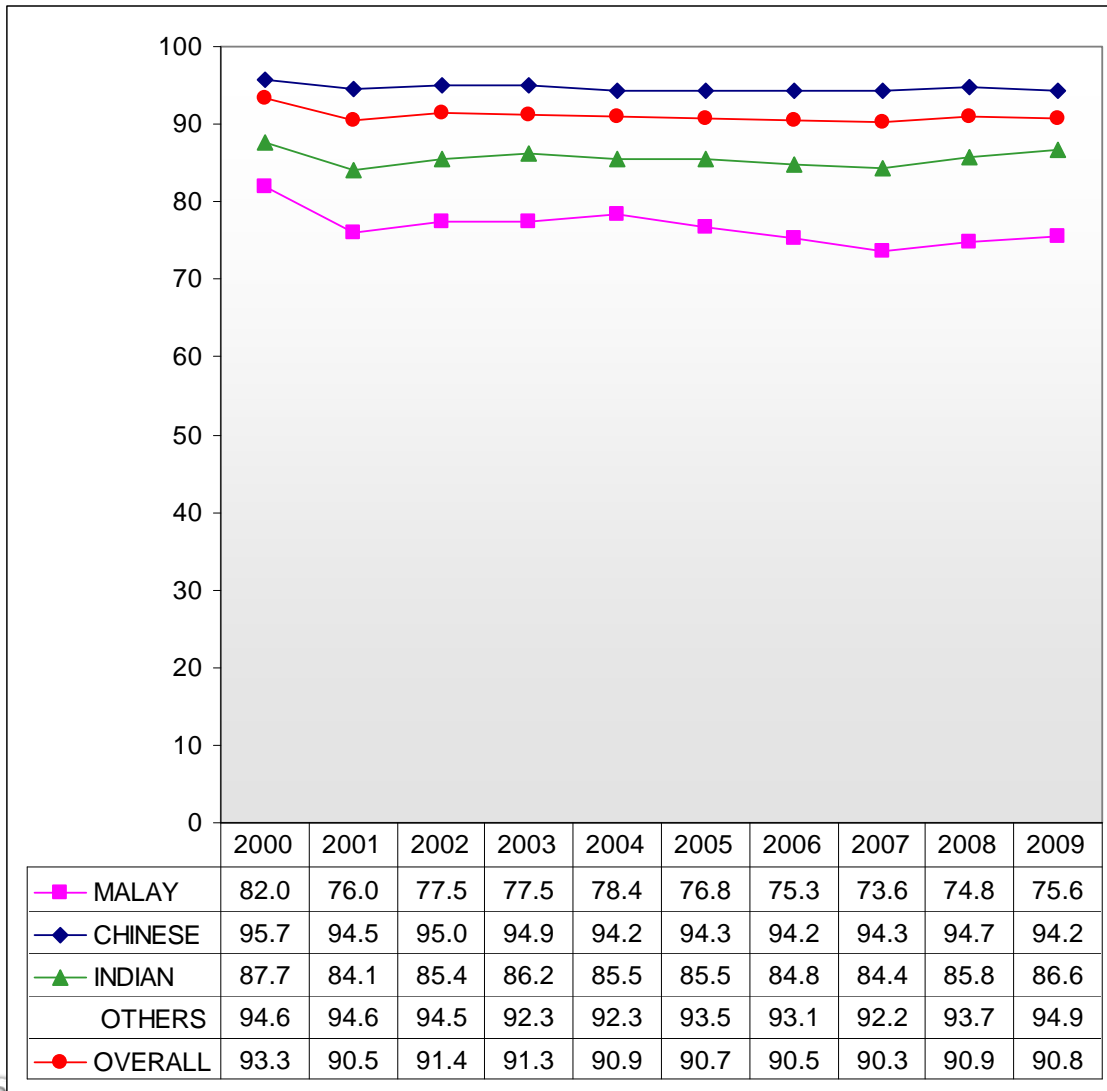
Chart A4: Percentage of PSLE Students who Scored A* - C in Standard Mathematics



1

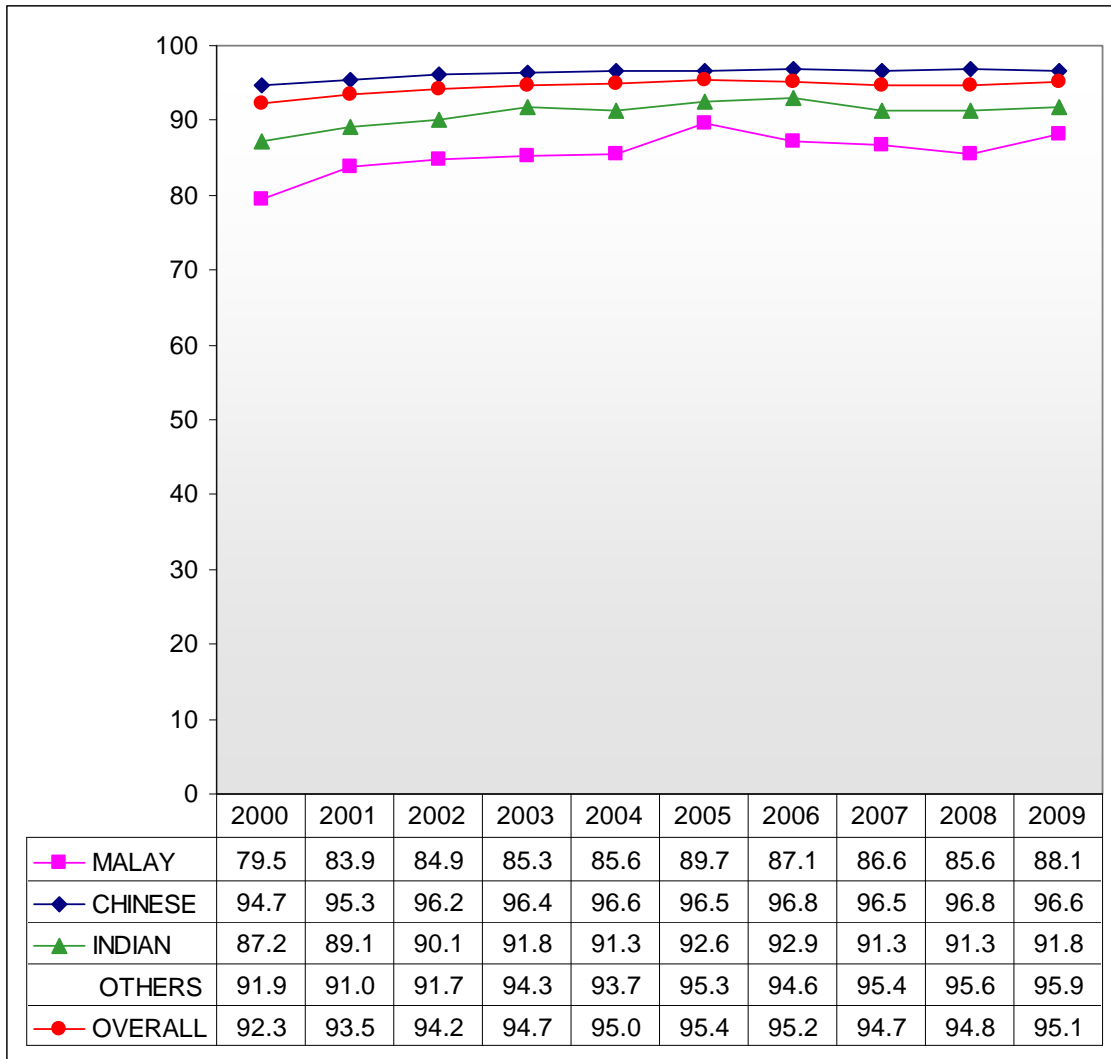
The first batch of students under the adjustment of the promotion criteria from P5 to P6 sat for PSLE in 2001.

Chart A5: Percentage of PSLE Students who Scored A* - C in Standard Science



1 The first batch of students under the adjustment of the promotion criteria from P5 to P6 sat for PSLE in 2001.

Chart B1: Percentage of GCE O-Level Students with At Least 3 O-Level Passes



1 Figures from 2005 onwards exclude IP students.

Chart B2: Percentage of GCE O-Level Students with At Least 5 O-Level Passes

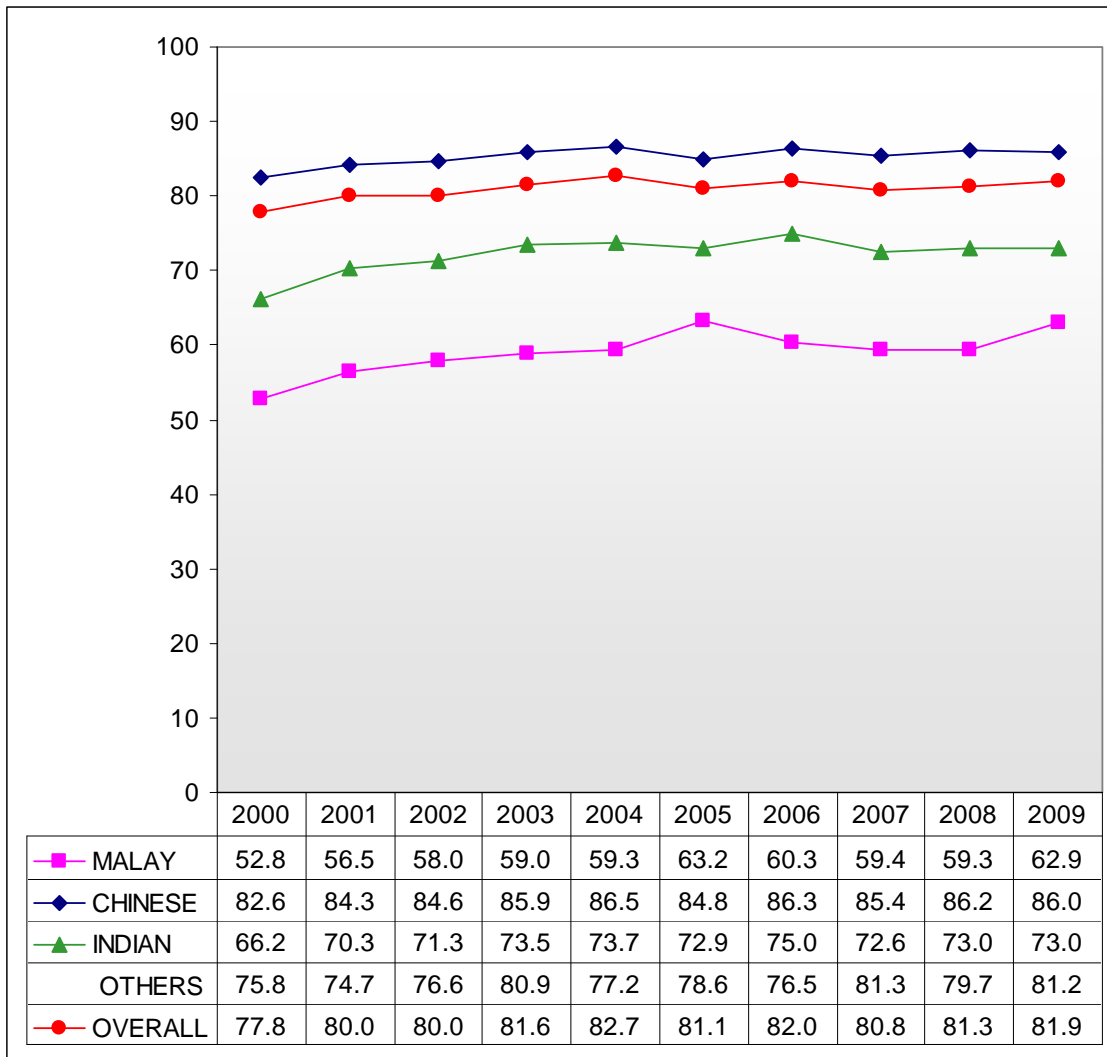


Chart B3: Percentage of GCE O-Level Students who Passed English Language

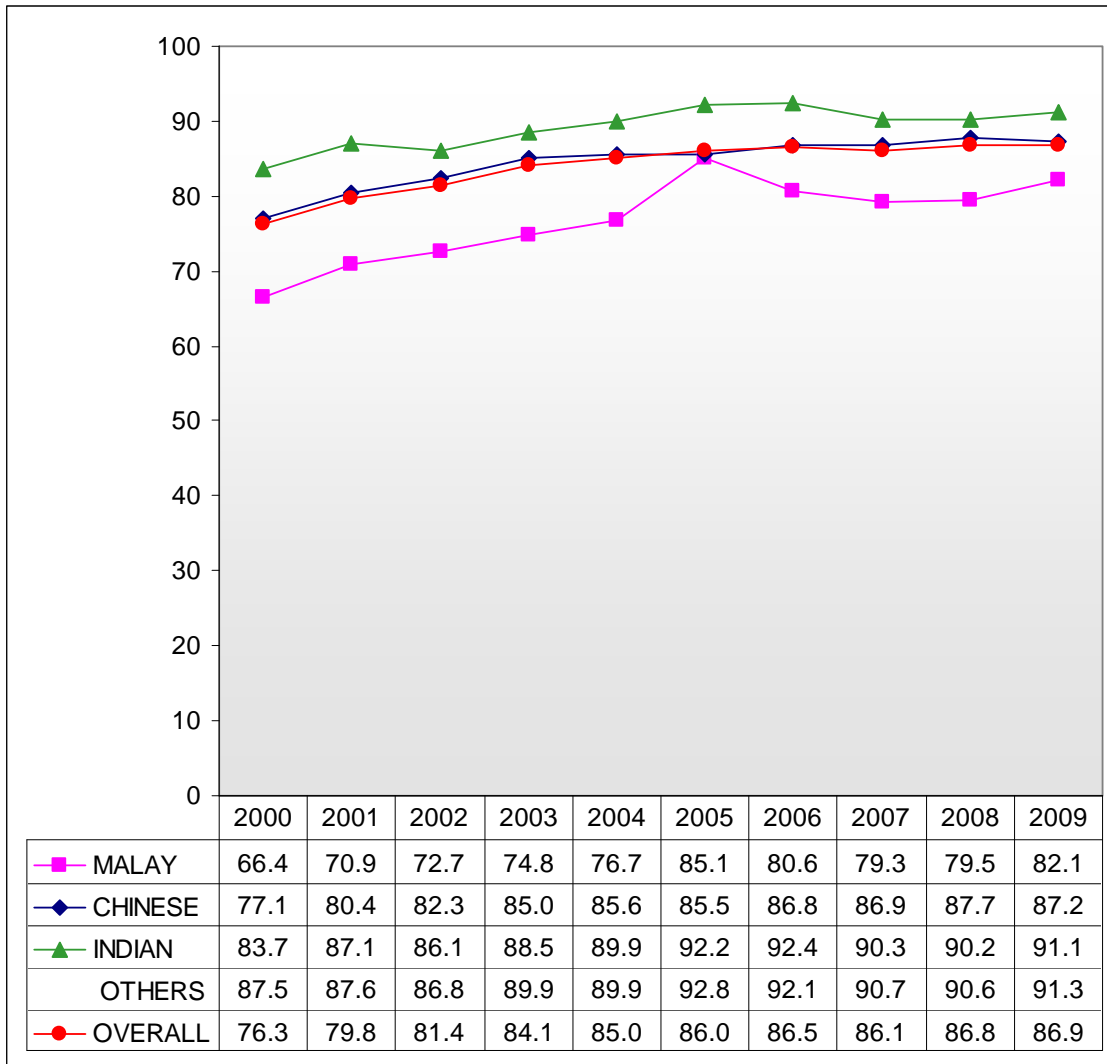
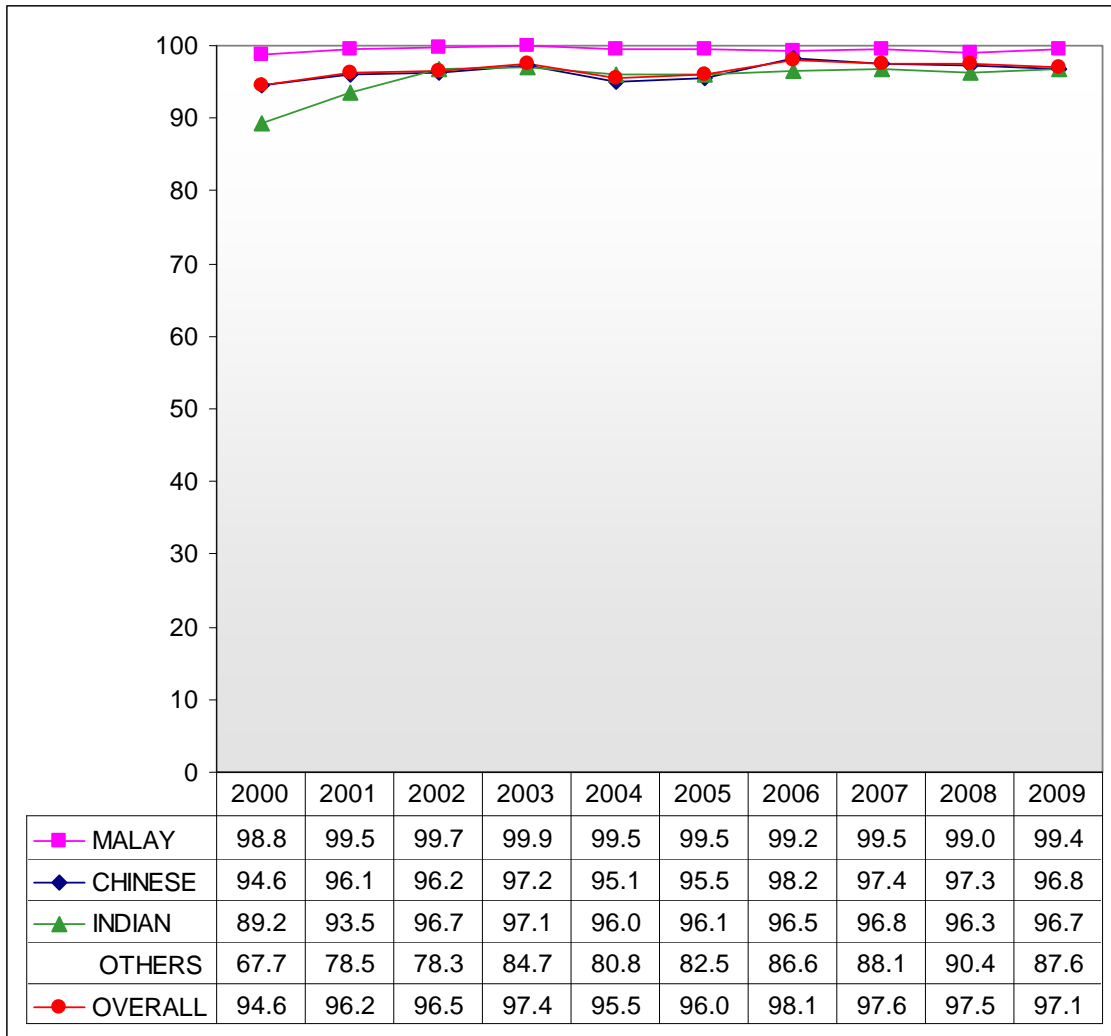


Chart B4: Percentage of GCE O-Level Students who Passed Mother Tongue Language



Figures from 2005 onwards exclude IP students.

Chart B5: Percentage of GCE O-Level Students who Passed Mathematics

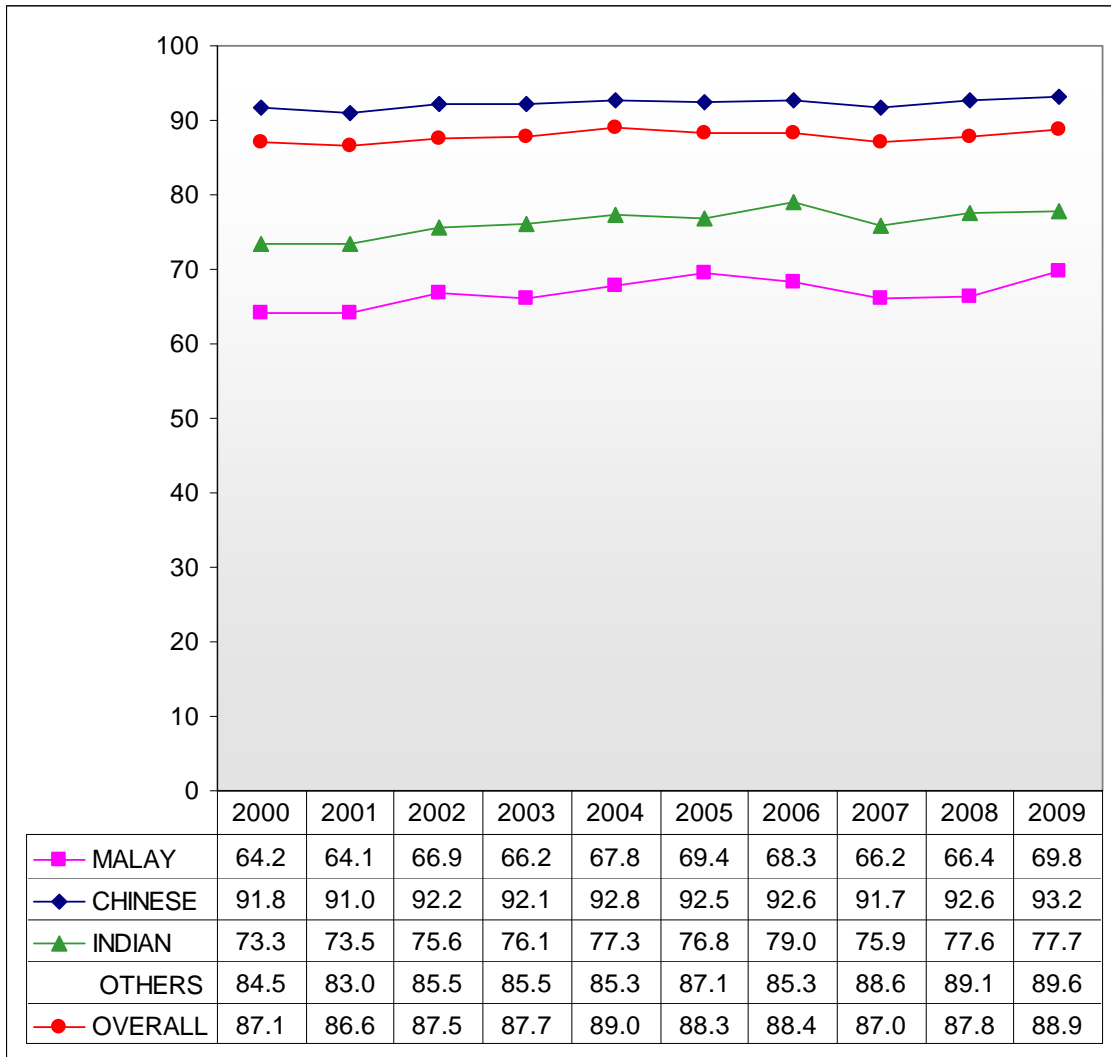
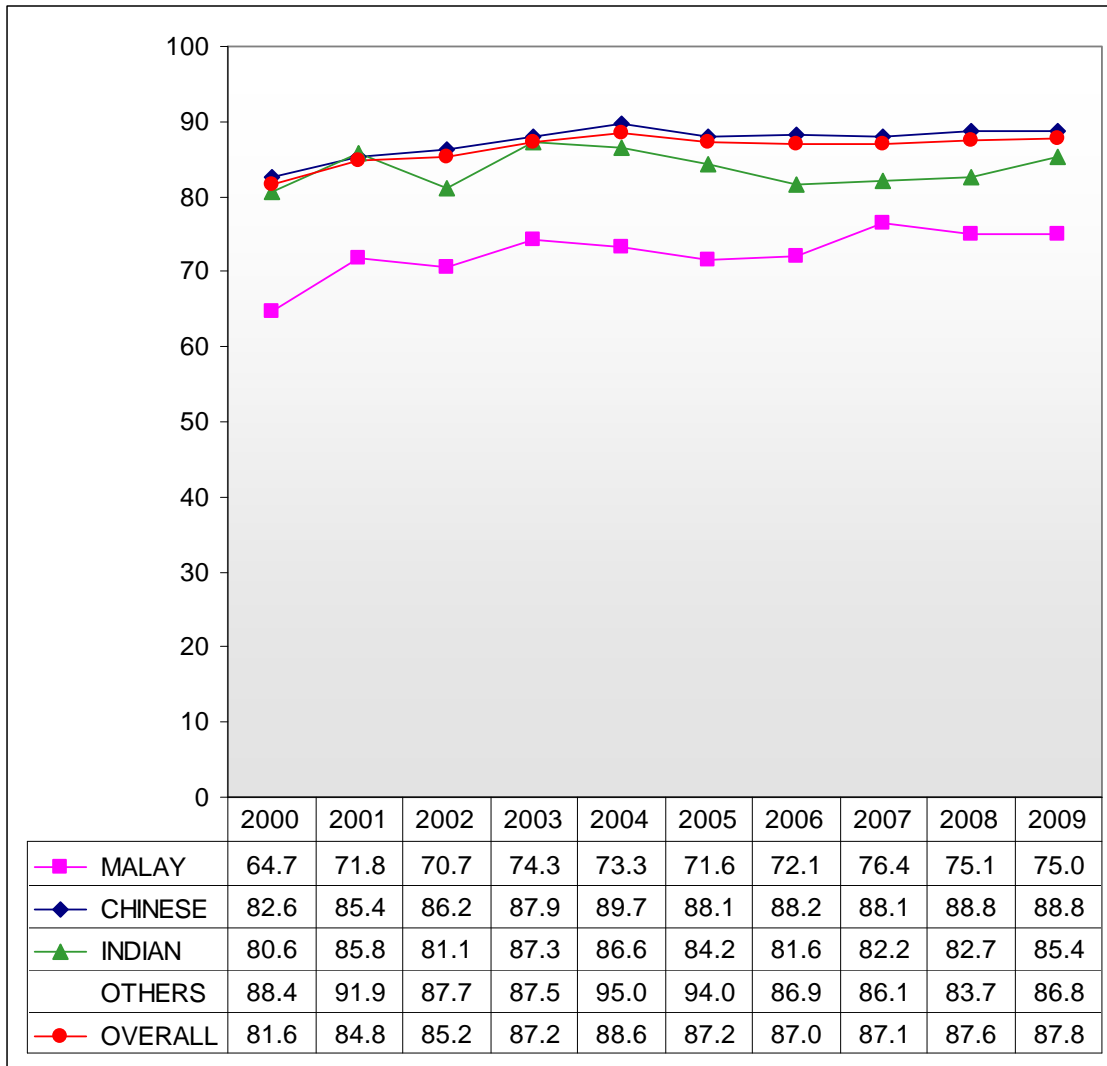


Chart C1: Percentage of GCE A-Level Students with At Least 3 'A'/H2' Passes and pass in General Paper or Knowledge and Inquiry



National Archives of Singapore

Chart C2: Percentage of GCE A-Level Students who Passed General Paper or Knowledge and Inquiry

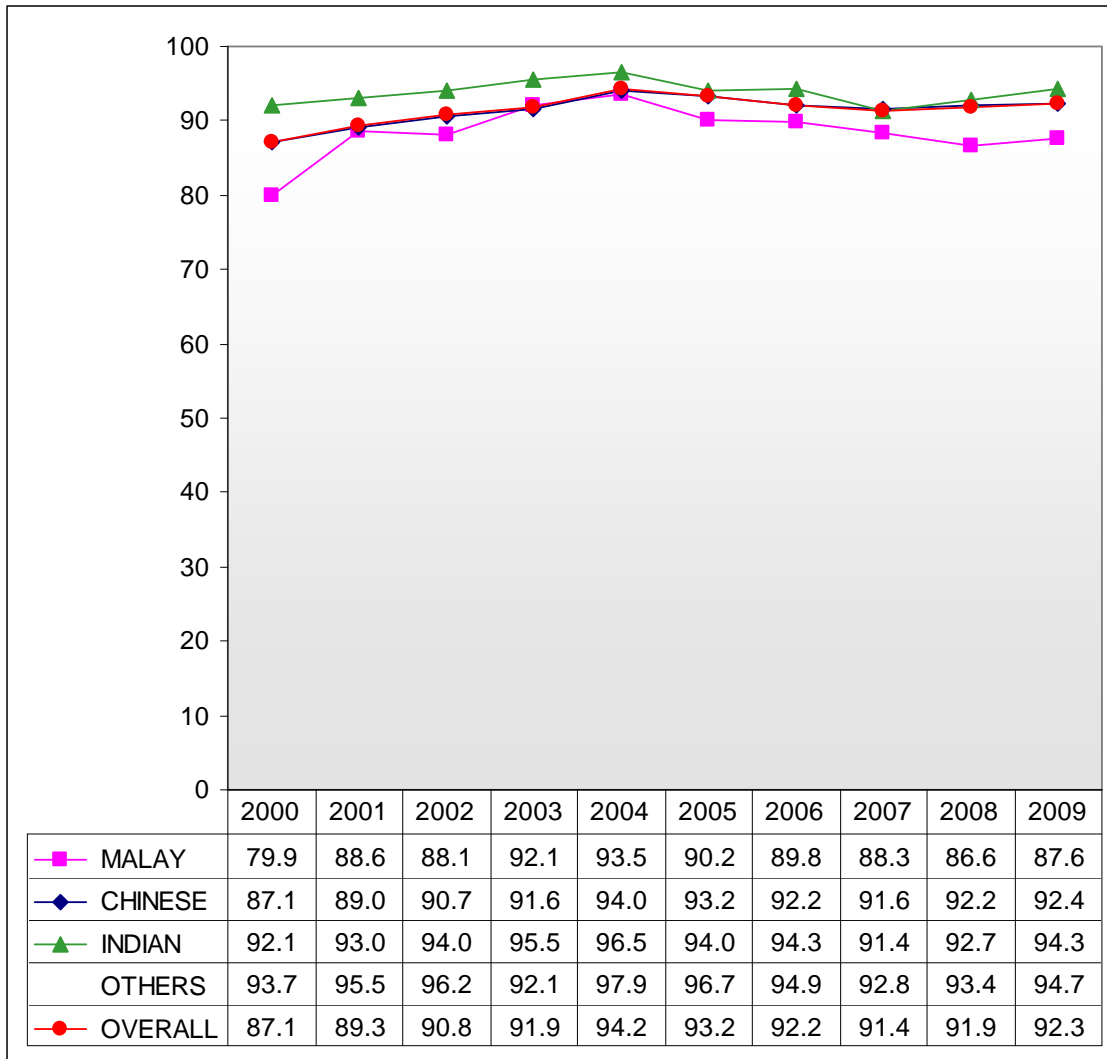
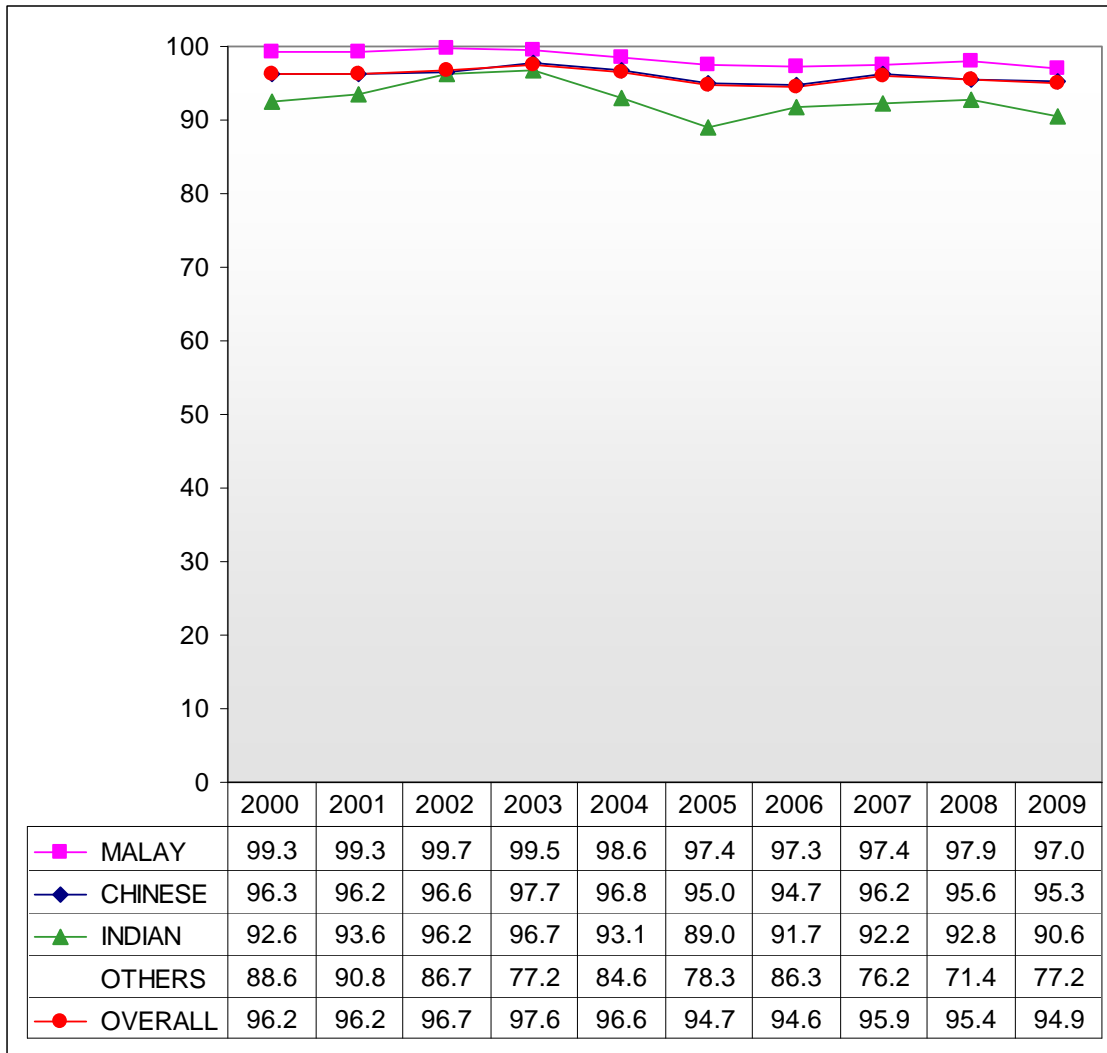
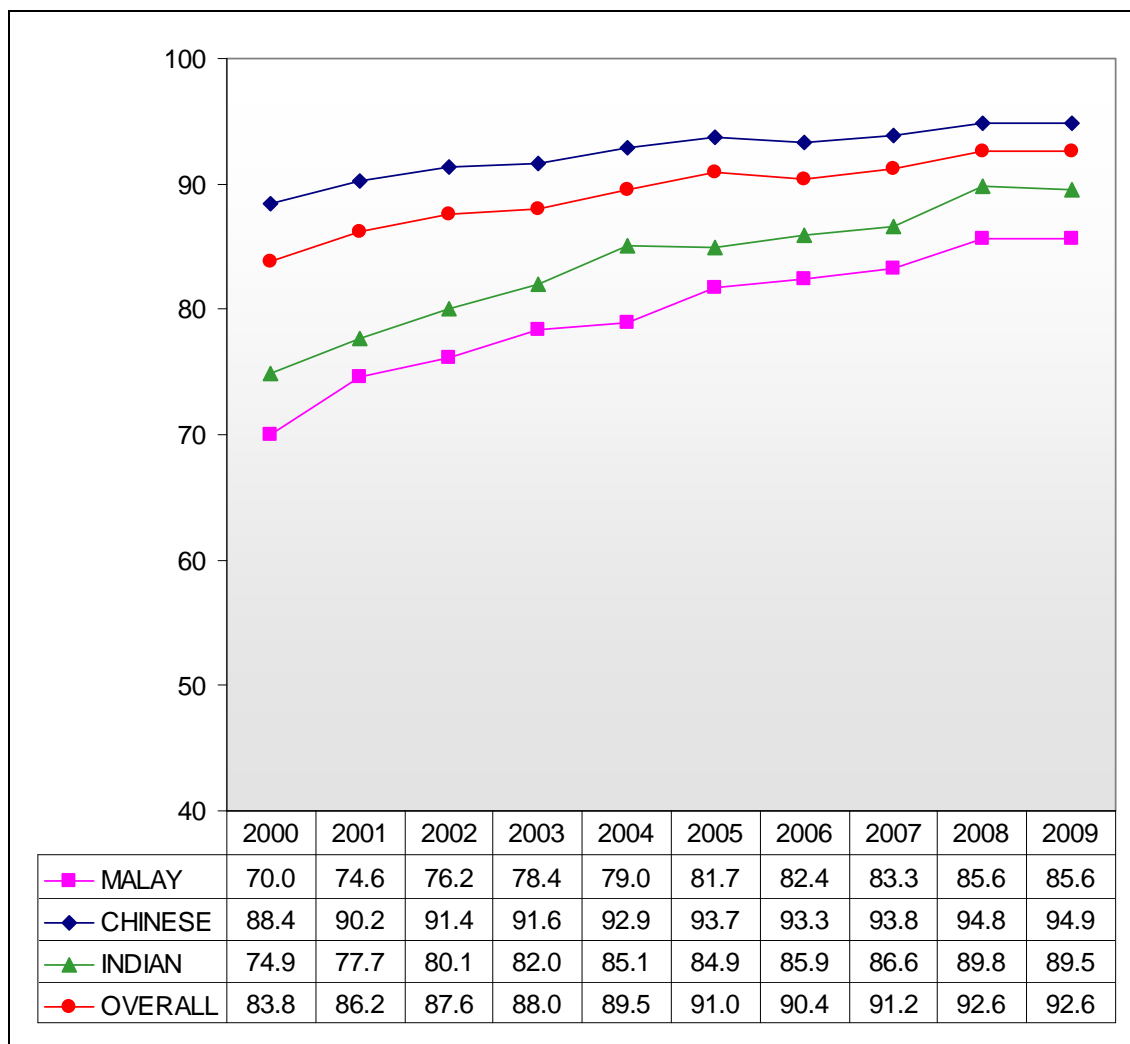


Chart C3: Percentage of GCE 'A' Level Students who Passed Mother Tongue Language at 'AO'/H1' Level



1 Figures from 2007 and 2008 include students taking either the new or old syllabus.

Chart D: Percentage of P1 Cohort Admitted to Post-Secondary Institutions¹



¹ Junior Colleges, Centralised Institute, Polytechnics, ITE, LaSalle College of the Arts, Nanyang Academy of Fine Arts and other private educational institutions offering courses at post-secondary level.

² Figures for 2005 – 2009 are preliminary.

³ Figures include participation in LaSalle College of the Arts, Nanyang Academy of Fine Arts and other private educational institutions, and also take into account students who have left the country.