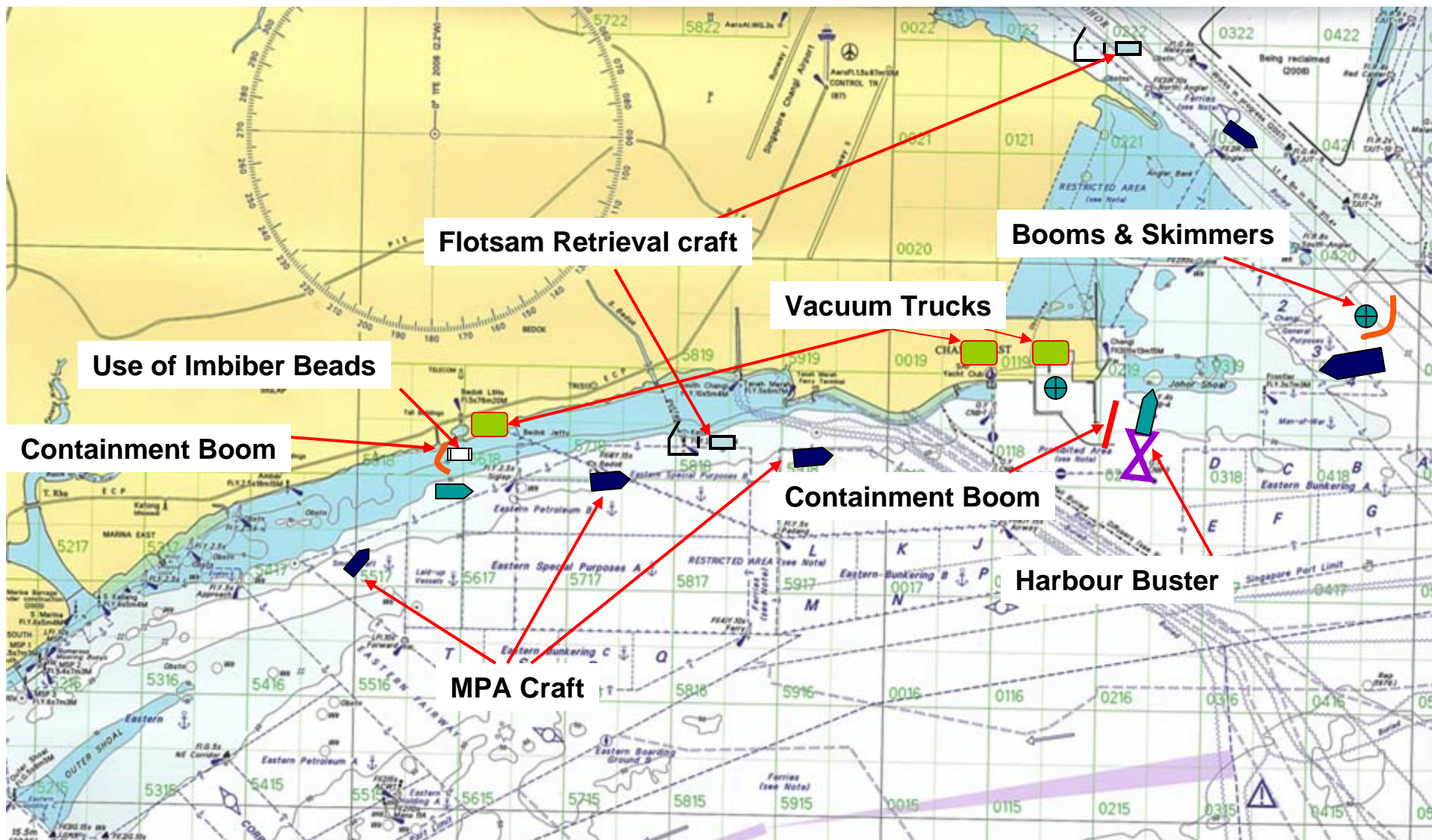


# Update 6: Collision between MT Bunga Kelana 3 and MV Waily in the Singapore Strait

Issued by MPA at 29 May 2010, 1700hrs

## Annex A

### Map of area



Update 6: Collision between MT Bunga Kelana 3 and MV Waily in the Singapore Strait

Issued by MPA at 29 May 2010, 1700hrs

## Annex B

**MPA's patrol craft monitoring the waters**



Update 6: Collision between MT Bunga Kelana 3 and MV Waily in the Singapore Strait

Issued by MPA at 29 May 2010, 1700hrs

## Annex B

MPA's "Api Api" craft monitoring the waters





**Update 6: Collision between MT Bunga Kelana 3 and MV Waily in the Singapore Strait**

**Issued by MPA at 29 May 2010, 1700hrs**

### **Annex B**

**Location: Off Changi Beach**

**Flotsam retrieval craft scooping oil stain flotsam and tar balls**

Update 6: Collision between MT Bunga Kelana 3 and MV Waily in the Singapore Strait

Issued by MPA at 29 May 2010, 1700hrs

## Annex B

Location: Off Changi Naval Base

Containment boom



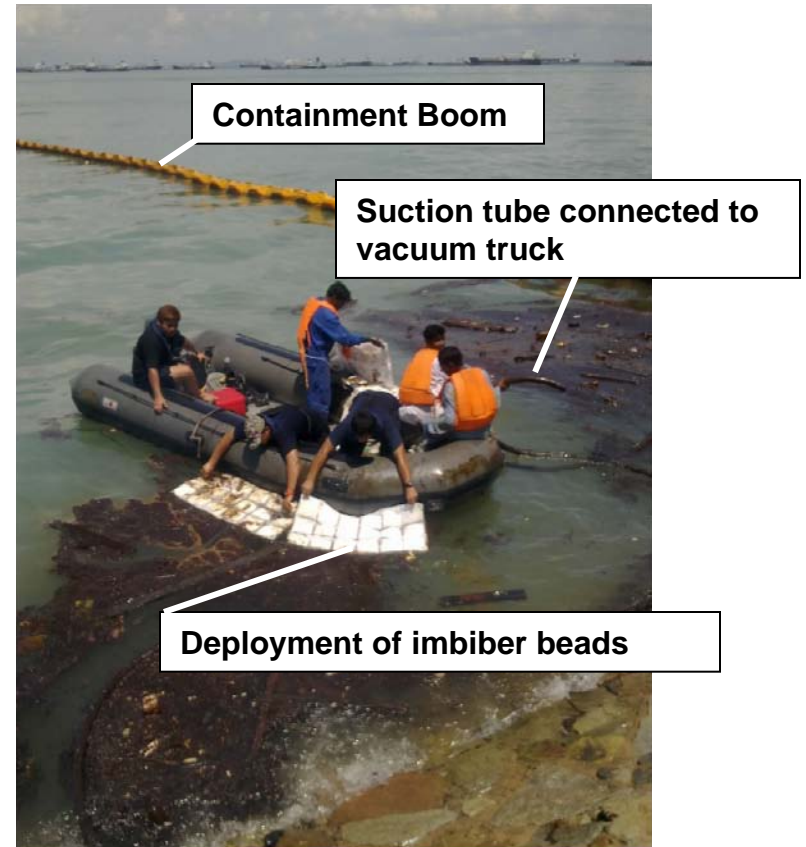


Update 6: Collision between MT Bunga Kelana 3 and MV Waily in the Singapore Strait

Issued by MPA at 29 May 2010, 1700hrs

## Annex B

Location: Outside East Coast Lagoon



Update 6: Collision between MT Bunga Kelana 3 and MV Waily in the Singapore Strait

Issued by MPA at 29 May 2010, 1700hrs

## Annex B

Location: Changi Naval Base

Vacuum Truck



**Update 6: Collision between MT Bunga Kelana 3 and MV Waily in the Singapore Strait**

**Issued by MPA at 29 May 2010, 1700hrs**

**Annex B**

**Location: Off East Coast**

**Craft towing the Harbour Buster**





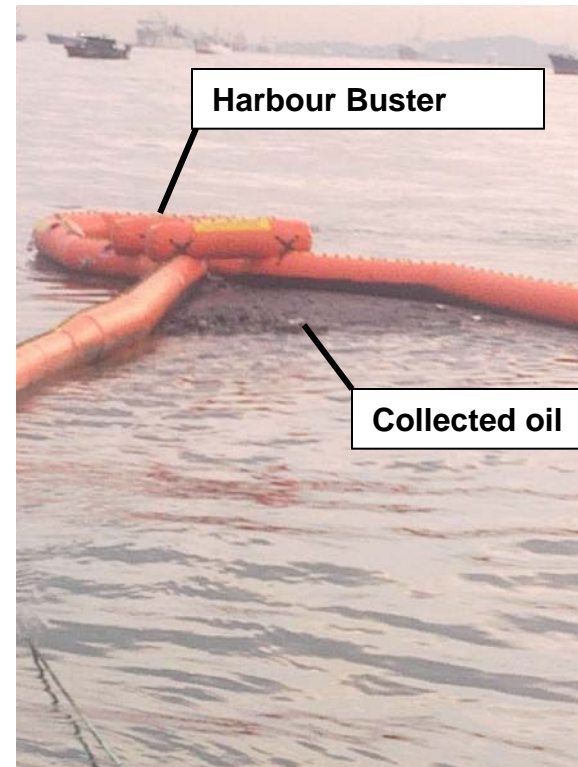


**Update 6: Collision between MT Bunga Kelana 3 and MV Waily in the Singapore Strait**

**Press Release issued by MPA at 29 May 2010, 1700hrs**

**Annex B**

**Location: Off East Coast Park**



**Harbour Buster**

**Collected oil**